



LIFE Institute

LIFE Institute is responsible for the technical development and management of **LIFE Methodology**, integrating business and biodiversity.

LIFE Methodology provides strategic guidance to organizations on how to consider biodiversity conservation and maintenance of natural resources on their management and decision-making processes.

LIFE Key is a management software that incorporates **LIFE Methodology**.

The use of **LIFE Methodology** assists organizations on meeting ESG criteria related to environmental issues by:

✓ Measuring business pressure on natural resources, considering environmental aspects such as emissions of greenhouse gases, consumption of energy and water, land cover, and waste generation.

✓ Evaluating business' risks and opportunities related to the business' pressure on natural resources, including their supply chain.

✓ Helping decision makers to strategically guide their investments on conservation efforts.



LIFE INSTITUTE

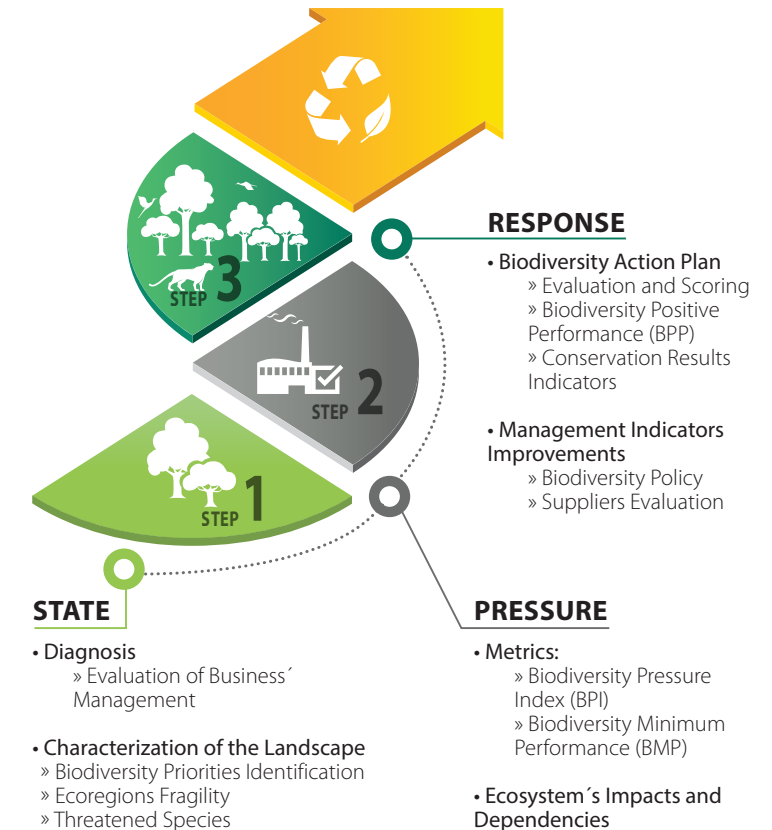
LIFE International in Brazil
LIFE Europe in Spain
contato@institutolife.org

 /lifecertification

 /company/instituto-life

www.institutolife.org/en

LIFE Methodology



Integration with global initiatives



LIFE Methodology is aligned to **85%** of targets directly related to the integrity of Biosphere.



LIFE Methodology integrates **90%** of GRI biodiversity-related topics.

This success case shows the trajectory of Boticário Group, using LIFE Methodology



Founded in 1977, **Boticário Group** is an international reference in beauty retail. It controls eight business units (Boticário Group, O Boticário, Eudora, quem disse berenice?, Beautybox, Vult, Multi B, Beleza na Web, and also maintain the Boticário Group Foundation for Nature Protection and the Boticário Group Institute). It is present in fifteen countries with a workforce of 12,000 direct employees.

Recognized for preserving ecological diversity, natural resources and ecosystems, Boticário Group is the first company in the cosmetics sector in the world to obtain LIFE Certification, after a third party evaluation carried out by Tecpar, LIFE accredited certification body.

The LIFE Certification is focused on Boticário Group unit, located in São José dos Pinhais - PR

1. Biodiversity Management

Improvements on Biodiversity Management

Different actions were taken by Boticário Group management so that the organization showed its commitment to LIFE biodiversity management's indicators. See some examples.

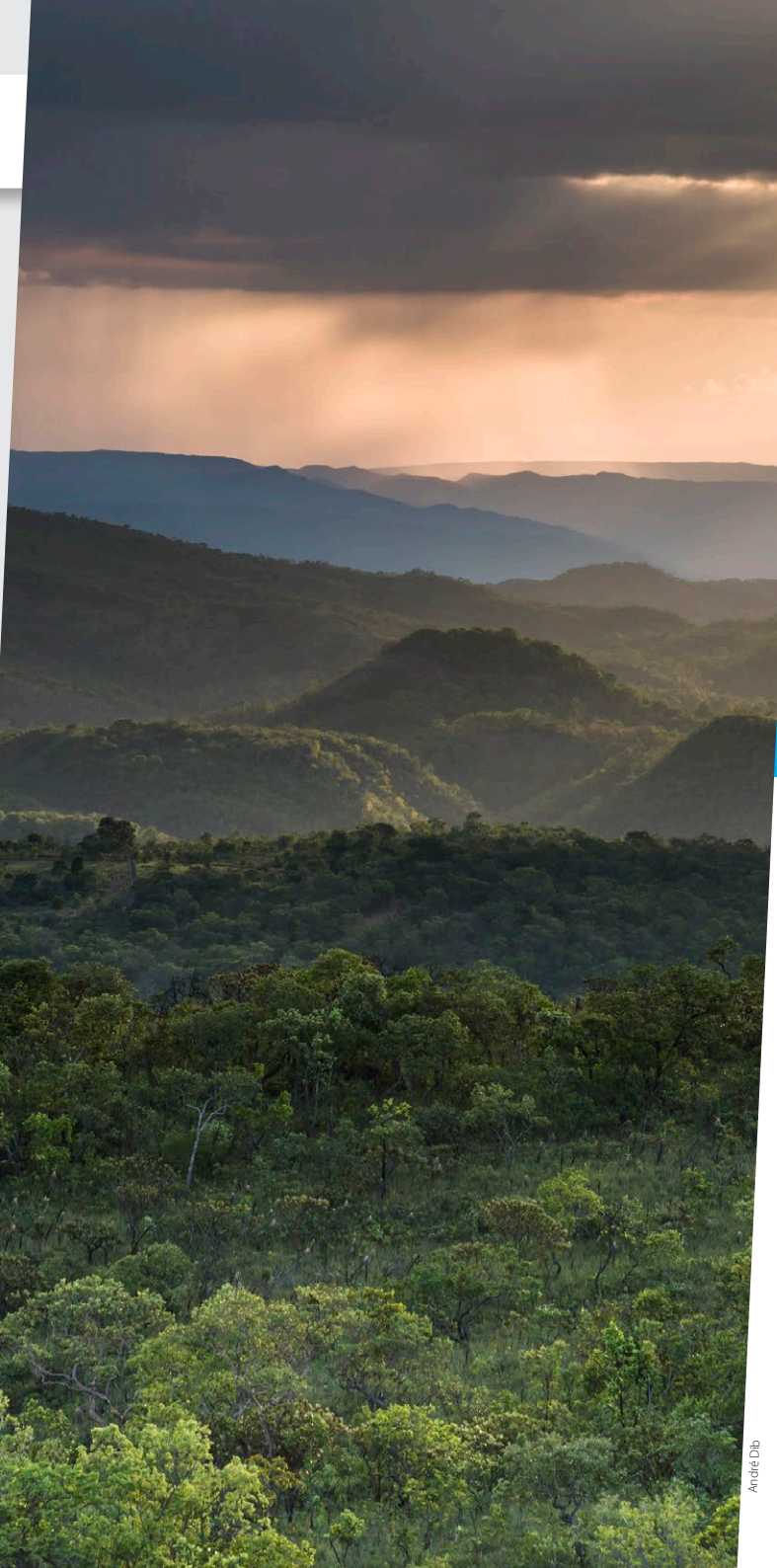
Review of the Health Policy, Occupational Safety and Environment, addressing commitments to biodiversity conservation

Compliance with legal requirements for access to genetic heritage and associated traditional knowledge

Safety and Environment integration training for new employees

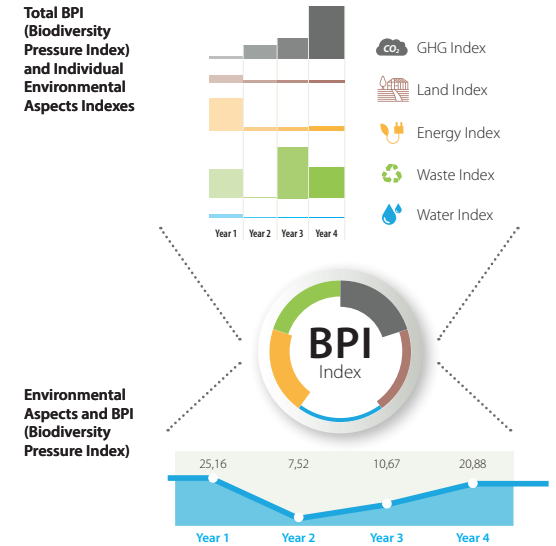
Review of the Salto Morato Reserve inspection and surveillance routine

CERTIFICADO Nº 0000.000
institucionalife.org/0000.000



2. Biodiversity Pressure Index

The Biodiversity Pressure Index (BPI) is calculated using data from different environmental aspects: water and energy use, GHG emissions, land cover, and waste generation. This index allowed the definition of a minimum score in biodiversity commitment for Boticário Group.



3. Biodiversity Positive Performance

As a response to compensate the BPI the company has to accomplish a Biodiversity Positive Performance (BPP) implementing conservation actions.

The main actions of **Boticário Group** linked to LIFE Certification are the **creation and maintenance of two important protected areas in Brazil.**



Salto Morato Natural Reserve is a Private Natural Heritage Reserve located in the municipality of Guaraqueçaba - PR. It is located in an area recognized by UNESCO, as a World Heritage Site, as part of the largest continuous remnant of Atlantic Forest in Brazil.



Serra do Tombador Natural Reserve is located in the Northeastern of Goiás, in Cavalcante. According to the Brazilian Ministry of Environment, the Reserve is in an extremely high priority region for biodiversity conservation. It has an area of 8,730 hectares in the *Cerrado*, a biome that houses the springs of the 3 main hydrographic basins in Brazil.

